



**Parkland**<sup>™</sup>  
RETIREMENT LIVING  
IN THE VALLEY

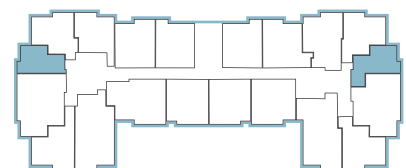
**All-Inclusive Lifestyle**

Jubilee Hall



## Studio

Suite Number: 205, 216, 305, 316, 405, 416  
Square Feet: 423  
Dimensions\*: Living / Dining / Bedroom - 14'2" x 13'4"



Floors 1-4

For more information about additional suites available at Parkland in the Valley contact our Lifestyle Consultant at 506-847-7275 or via [experienceparkland.com](http://experienceparkland.com).

*\*Suite measurements and features are approximate and may differ.*



**Parkland**<sup>™</sup>  
RETIREMENT LIVING  
IN THE VALLEY

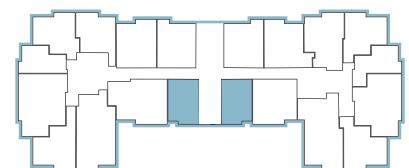
**All-Inclusive Lifestyle**

Jubilee Hall



## Studio

Suite Number: 210, 211  
Square Feet: 419  
Dimensions\*: Living / Dining / Bedroom - 16'9" x 12'9"



Floors 1-4

For more information about additional suites available at Parkland in the Valley contact our Lifestyle Consultant at 506-847-7275 or via [experienceparkland.com](http://experienceparkland.com).

\*Suite measurements and features are approximate and may differ.



**Parkland**<sup>™</sup>  
RETIREMENT LIVING  
IN THE VALLEY

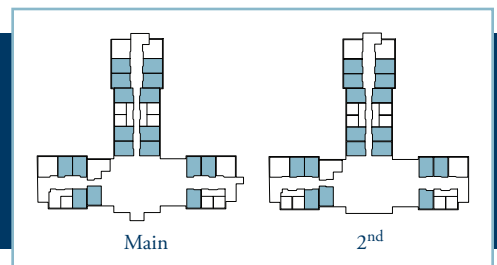
## Supportive Lifestyle

Concorde Hall - Assisted Living



### Studio

Suite Number: 102, 106-109, 112-114, 117-119, 122, 123, 125, 126, 130, 131  
202, 206-209, 212-214, 217-219, 222, 223, 225, 226, 230, 231  
Square Feet: 400  
Dimensions\*: Living / Dining / Bedroom - 16'7" x 16'7"



For more information about additional suites available at Parkland in the Valley contact our Lifestyle Consultant at 506-847-7275 or via [experienceparkland.com](http://experienceparkland.com).

\*Suite measurements and features are approximate and may differ.



**Parkland**<sup>™</sup>  
RETIREMENT LIVING  
IN THE VALLEY

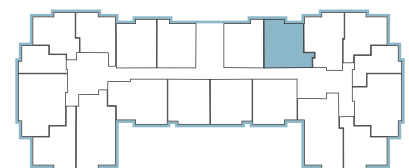
**All-Inclusive Lifestyle**

Jubilee Hall



## One Bedroom

Suite Number: 219, 319, 419  
Square Feet: 572  
Dimensions\*: Living / Dining - 11'7" x 12'1" Bedroom - 10'7" x 13'3"



Floors 1-4

For more information about additional suites available at Parkland in the Valley contact our Lifestyle Consultant at 506-847-7275 or via [experienceparkland.com](http://experienceparkland.com).

*\*Suite measurements and features are approximate and may differ.*



**Parkland**<sup>™</sup>  
RETIREMENT LIVING  
IN THE VALLEY

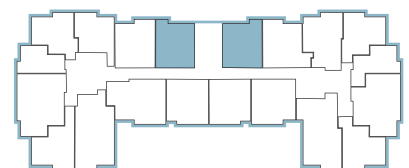
**All-Inclusive Lifestyle**

Jubilee Hall



## One Bedroom

Suite Number: 101, 201, 220, 301, 320, 401, 420  
Square Feet: 583  
Dimensions\*: Living / Dining - 10'6" x 11'10" Bedroom - 10'6" x 11'4"



Floors 1-4

For more information about additional suites available at Parkland in the Valley contact our Lifestyle Consultant at 506-847-7275 or via [experienceparkland.com](http://experienceparkland.com).

*\*Suite measurements and features are approximate and may differ.*



**Parkland**<sup>™</sup>  
RETIREMENT LIVING  
IN THE VALLEY

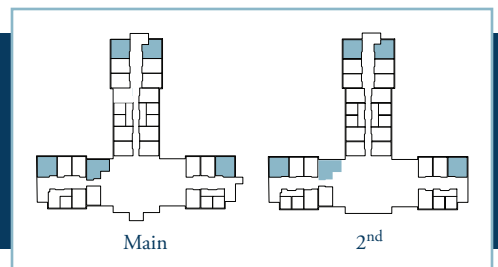
## Supportive Lifestyle

Concorde Hall - Assisted Living



### One Bedroom

Suite Number: 105, 115, 116, 124, 127, 205, 215, 216, 224, 227  
Square Feet: 550  
Dimensions\*: Living / Dining - 11'7" x 14'6" Bedroom - 10'6" x 14'8"



For more information about additional suites available at Parkland in the Valley contact our Lifestyle Consultant at 506-847-7275 or via [experienceparkland.com](http://experienceparkland.com).

\*Suite measurements and features are approximate and may differ.



**Parkland**<sup>™</sup>  
RETIREMENT LIVING  
IN THE VALLEY

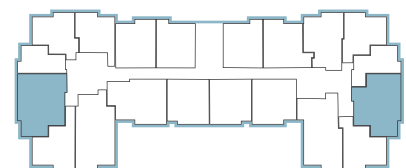
**All-Inclusive Lifestyle**

Jubilee Hall



## Two Bedroom

Suite Number: 206, 215, 306, 315, 406, 415  
Square Feet: 817  
Dimensions\*: Living / Dining - 14'8" x 11'11" Bedroom - 12'3" x 12'1"



Floors 1-4

For more information about additional suites available at Parkland in the Valley contact our Lifestyle Consultant at 506-847-7275 or via [experienceparkland.com](http://experienceparkland.com).

*\*Suite measurements and features are approximate and may differ.*



**Parkland**<sup>™</sup>  
RETIREMENT LIVING  
IN THE VALLEY

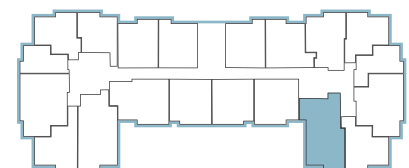
**All-Inclusive Lifestyle**

Jubilee Hall



## Two Bedroom

Suite Number: 213, 313, 413  
Square Feet: 894  
Dimensions\*: Living / Dining - 12'11" x 9'11" Bedroom - 16'0" x 10'4"



Floors 1-4

For more information about additional suites available at Parkland in the Valley contact our Lifestyle Consultant at 506-847-7275 or via [experienceparkland.com](http://experienceparkland.com).

\*Suite measurements and features are approximate and may differ.