



**Parkland**<sup>™</sup>  
RETIREMENT LIVING  
FREDERICTON

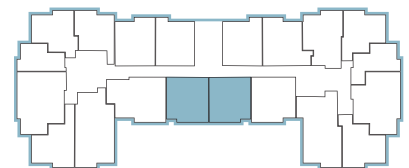
**All-Inclusive Lifestyle**

Governor Hall



## Studio

Suite Number: 205, 216, 305, 316, 405, 416  
Square Feet: 423  
Dimensions\*: Living / Dining / Bedroom - 14'2" x 13'4"



Floors 1-4

For more information about additional suites available at Parkland Fredericton contact our Lifestyle Consultant at 506-455-7275 or via [experienceparkland.com](http://experienceparkland.com).

\*Suite measurements and features are approximate and may differ.



**Parkland**<sup>™</sup>  
RETIREMENT LIVING  
FREDERICTON

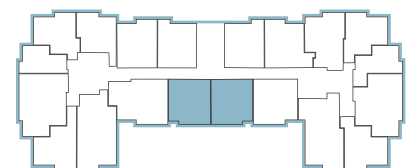
**All-Inclusive Lifestyle**

Governor Hall



## Studio

Suite Number: 210, 211  
Square Feet: 419  
Dimensions\*: Living / Dining / Bedroom - 16'9" x 12'9"



Floors 1-4

For more information about additional suites available at Parkland Fredericton contact our Lifestyle Consultant at 506-455-7275 or via [experienceparkland.com](http://experienceparkland.com).

*\*Suite measurements and features are approximate and may differ.*



**Parkland**<sup>™</sup>  
RETIREMENT LIVING  
FREDERICTON

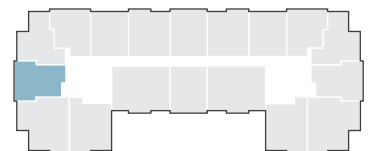
**All-Inclusive Lifestyle**

Regent Hall



## Studio

Suite Number: 103  
Square Feet: 463  
Dimensions\*: Living / Dining / Bedroom - 13'1" x 14'9"



For more information about additional suites available at Parkland Fredericton contact our Lifestyle Consultant at 506-455-7275 or via [experienceparkland.com](http://experienceparkland.com).

\*Suite measurements and features are approximate and may differ.





**Parkland**<sup>™</sup>  
RETIREMENT LIVING  
FREDERICTON

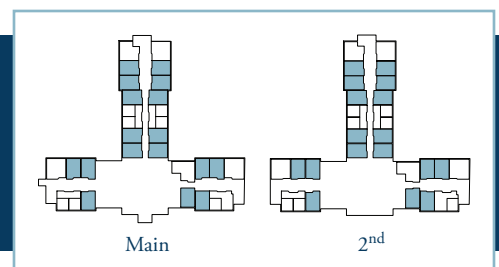
## All-Inclusive Lifestyle

Brunswick Hall - Assisted Living



### Studio

Suite Number: 102, 106-109, 112-114, 117-119, 122, 123, 125, 126, 130, 131  
202, 206-209, 212-214, 217-219, 222, 223, 225, 226, 230, 231  
Square Feet: 400  
Dimensions\*: Living / Dining / Bedroom - 16'7" x 16'7"



For more information about additional suites available at Parkland Fredericton contact our Lifestyle Consultant at 506-455-7275 or via [experienceparkland.com](http://experienceparkland.com).

*\*Suite measurements and features are approximate and may differ.*